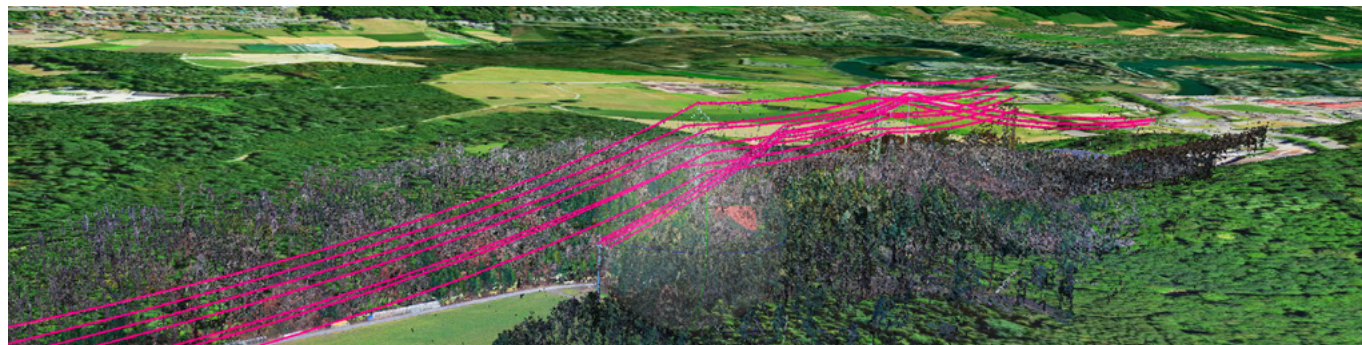


# Powerline detection with the Sony RX1 sensor

How to map powerlines faster and easier with the RX1 sensor



## Project Details

- ✓ Length - 5 km, captured in 1 flight

## Project Parameters

- ✓ Flight altitude: 40 m above the powerlines, GSD - 1.82 cm/px
- ✓ Flight settings: Corridor Mapping with 85% / 75% overlaps

## Software and data processing

### Agisoft Metashape

- ✓ Standard photogrammetry workflow for orthomosaic and Digital Elevation Model (DEM)
- ✓ Automatic extraction of power lines from images within Agisoft



## Inspection

General Right of Way inspection

### Data Used

- ✓ Orthomosaic
- ✓ Digital Elevation Model

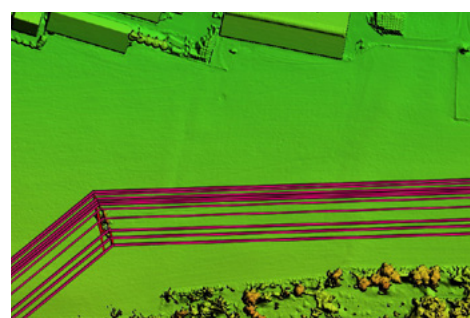


## Quality Control

Trimming work validation

### Data Used

- ✓ Geotagged images
- ✓ Point Clouds



## Contracting

Contractor Job monitoring

### Data Used

- ✓ Orthomosaic



## Documentation

Clearance/growth documentation

### Data Used

- ✓ Orthomosaic
- ✓ Digital Elevation Model



## Data

[Sample Dataset](#)

[Hedingen Fly through video](#)